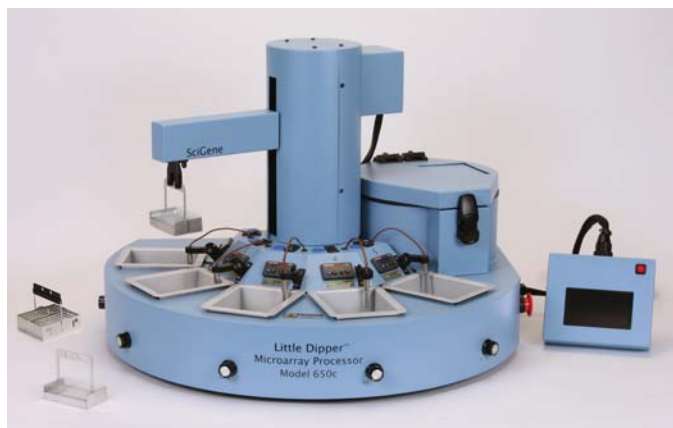


Little Dipper™ Processor for FISH

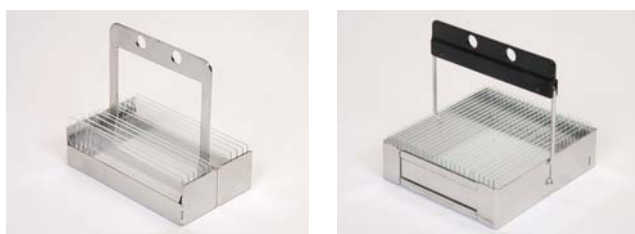
Automates Slide Processing Using Vysis® and Other Probes



Post-Hyb Process up to 24 Slides at One Time

The Little Dipper Processor for FISH provides precisely controlled automation of the post-hybridization processing steps used with fluorescent *in situ* hybridization (FISH) methods.

The robotic system controls wash agitation, time and buffer temperatures for processing batches of up to 24 slides following optimized protocols. The system eliminates messy Coplin jars, waterbaths and staining dishes used in manual methods, freeing up valuable technician time.



The Little Dipper controls critical wash temperatures while processing batches of 12 or 24 slides.

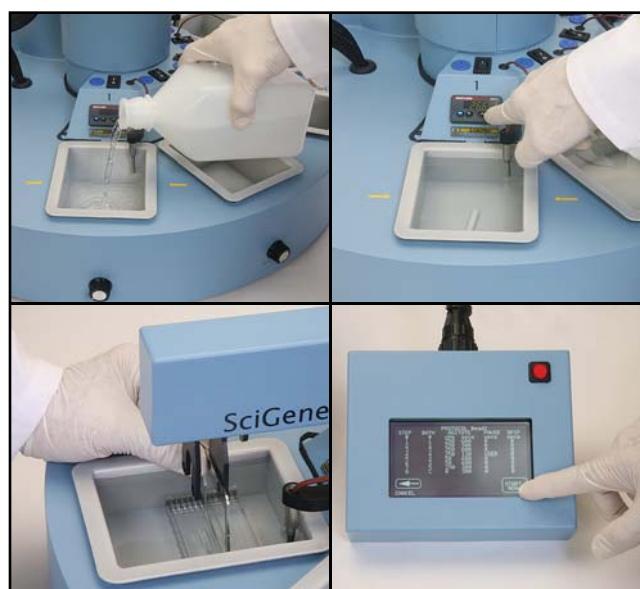
Accurate Temperature Control Improves Assay Reproducibility

Precise control of buffer temperatures is critical for obtaining consistent low backgrounds and high FISH probe signals. The Little Dipper Processor quickly heats and then regulates wash buffer temperatures to $\pm 0.5^\circ\text{C}$ from set point — performance far superior to water baths and hot plates. The instrument is designed for use by CLIA-certified labs with a built-in system for verifying and calibrating accurate buffer temperatures.

Simple Training and Operation

After filling baths, setting temperatures and activating stir bars, slides are loaded into either a 12 or 24-position rack and mounted onto the robotic arm. Dual washing action is achieved through the movement of the robotic arm and stir bar vortex.

The instrument performs programmed wash and dry steps and holds the slides in the dark ready for counterstain and imaging. The simplicity of design makes training a snap and ensures consistent day-to-day results by different operators.

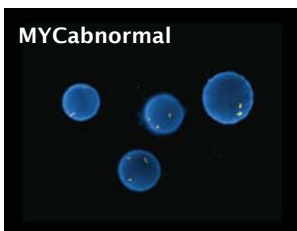
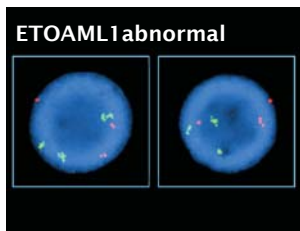
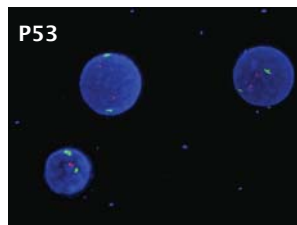
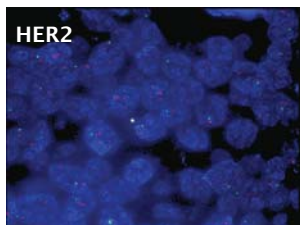


Add buffers and stir bars, set temperature, load slide rack and then start protocol.

Little Dipper™ Processor for FISH

Programmed for Vysis Probes

Validated protocols for Vysis probes are pre-programmed incorporating a pre-warming slide “dip” to ensure that the critical 73°C target temperature is constantly maintained during washing. Users may also create custom protocols to meet special conditions for other probes.



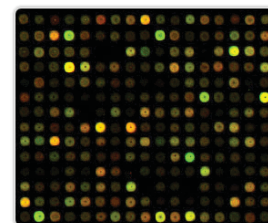
The Little Dipper Processor provides high signals and low backgrounds with Vysis or other FISH probes.

Automates Day 1 Slide Processing

The Little Dipper Processor can also be used to automate Day 1 sample processing. The system’s fine control of temperature and washing action makes it ideal for processing FFPE and other FISH samples. Using additional baths, it performs deparaffinization, deproteinization, fixation and dehydration of up to 24 slides per batch.

Use it for aCGH Based Tests Too!

The Little Dipper Processor for FISH is ready to use for processing microarrays for laboratories that offer aCGH as a diagnostic tool. The system automates the post-hybridization steps used with Agilent, Illumina, Roche/NimbleGen, Signature-Select® and self-spotted arrays.



Use the system for FISH or with Agilent, Illumina, Roche/NimbleGen and Signature Genomic Arrays.

Specifications

Electrical	
Cat.# 1080-70-1	115V AC; 50/60 Hz; 1700W
Cat.# 1080-70-2	220V AC; 50/60 Hz; 1700W
Dimensions (HxWxD)	
	20 x 28 x 22 inches (51 x 71 x 56 cm)
Weight	
Instrument Net	47 lbs (21 kg)
Shipping Gross	85 lbs (39 kg)
Performance and Controls	
Temperature Range	Ambient +5°C to 90°C
Temperature Regulation	± 0.5°C from set point
Bath Volumes	5x 670 ml
Centrifuge RPM / force	900 RPM / 50 g

Ordering Information

Catalog No.	Description	UoM
1080-70-1	Little Dipper Processor for FISH, 115V.	EA
1080-70-2	Little Dipper Processor for FISH, 220V.	EA
Ships complete with baths, processing racks, pre-loaded optimized programs and digital thermometer for temperature certification/calibration. Includes a 12 month warranty.		
Extended Warranty Options		
1080-01-1	12 Month Extended Warranty.	EA
1080-01-2	24 Month Extended Warranty.	EA
1080-01-3	36 Month Extended Warranty.	EA
Related Equipment		
1090-00-1	NoZone Workspace, 115V.	EA
1090-00-2	NoZone Workspace, 220V.	EA
1090-11-1	NoZone TL Workspace, 115V.	EA
1090-11-2	NoZone TL Workspace, 220V.	EA

SciGene
306 Potrero Avenue
Sunnyvale, CA 94085
USA

(408) 733-7337 Tel
(408) 733-7336 Fax
www.scigene.com