

T:GENIUS

GEL IMAGING
AT A TOUCH



S Y N G E N E
A DIVISION OF THE SYNOPTICS GROUP



The **T:Genius** is an integrated system for DNA and protein analysis and gel documentation. Based on the successful Syngene gel documentation range, the **T:Genius** features an integrated tablet PC running the highly acclaimed GeneSys automated control system for image capture and editing.

A new generation CCD camera enables you to select an image output of 12.9m pixels.

T:Genius uses an f1.0 motor driven zoom lens to enable perfect imaging of any gel or blot size. The maximum viewing area is 24 x 20cm which is very large for such a small footprint unit.

Internal lighting includes a UV transilluminator option for working with DNA gels. A white light converter option can quickly extend its use for working with visible gels and blots.

With the increased demand for imaging DNA gels at a higher wavelength than UV to prevent DNA damage, the **T:Genius** has powerful epi blue LEDs compatible with 'safe' dyes such as SYBR® Safe.

Quickly generate quantitative data with GeneTools analysis software. The **T:Genius** comes with 4 extra copies of GeneTools analysis software as standard. Access your images anywhere, at any time and from any computer, smartphone and tablet using the new '**StatusLink**' feature which is ideal for any busy laboratory.

T:Genius is a new generation, low cost, small footprint gel documentation system for all your DNA and protein gel/blot applications.

- Up to 12.9m pixel image output
- Integral EPI blue light for 'safe' gel imaging
- Small footprint
- Motor driven optics
- Touch screen tablet control with GeneSys



T:GENIUS

Simply Genius. Designed to make your gel imaging simple, quick and easy. No set up - just a complete imaging system for all your 1D needs.

A smooth and intuitive touch screen tablet ensures that anyone can use a **T:Genius** with virtually no previous experience of gel imaging.

T:Genius - from switch-on to perfect image at a touch.

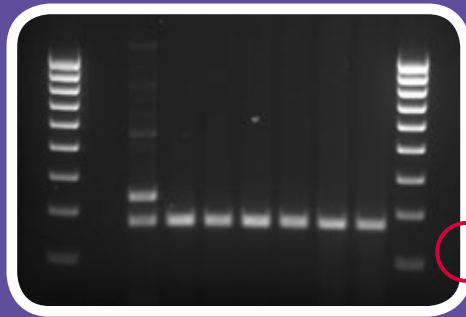


Features	Benefits
Compact darkroom with hinged door	Small footprint taking up minimal laboratory bench space
Can use a range of lighting	Versatile - white light, blue light, UV
No compromise on resolution - up to 12.9m pixels	Exceptional resolution for high quality images
Easy to access filter slider with interchangeable filters	Capable of viewing a wide range of different fluorophores
Integral tablet (optional) 10.8" colour touch screen - full HD	WiFi connectivity, USB ports and an internal hard disk for image storage Full intuitive touch control of all functions with large image view
Image enhancements and annotations using GeneSys	Total control over image quality, capture and editing
Save images in TIFF, BMP or JPEG format	Simple to download to any PC or Mac

T:GENIUS SPECIFICATION

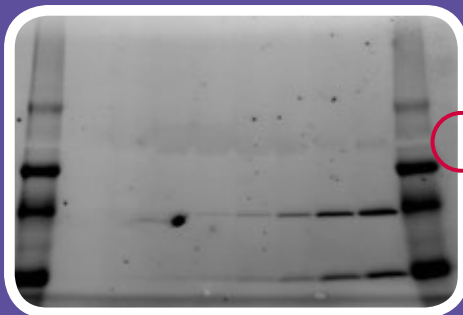
	T:Genius	T:Genius NT
Image	Up to 12.9m pixel image output	Up to 12.9m pixel image output
Base resolution	3.2m pixels	3.2m pixels
Bit depth	16	16
Lens	F1.0 motor driven zoom lens	F1.0 motor driven zoom lens
Tablet	Dell Venue II Pro Win 8	N/A
Screen	10.8" HD	N/A
Transilluminator	20 x 24cm filter area, 302nm	20 x 24cm filter area, 302nm
White light	Epi LEDs	Epi LEDs
Blue light	Epi blue LEDs	Epi blue LEDs
Analysis software	GeneTools	GeneTools
Filter	3 position filter slider with UV filter	3 position filter slider with UV filter
Dimensions w x h x d (cm)	31 x 76 x 45	31 x 76 x 45
Weight	22 kg without transilluminator 26 kg with transilluminator	22 kg without transilluminator 26 kg with transilluminator
Communications	USB, WiFi, Bluetooth	N/A

T:GENIUS APPLICATIONS



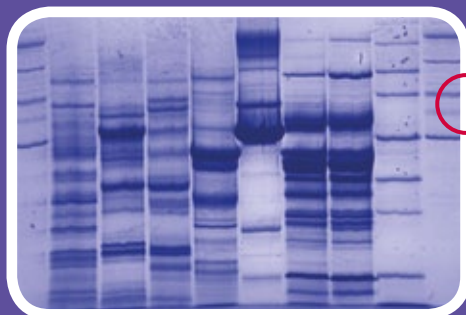
DNA

With a **T:Genius** you can use the UV transilluminator to capture images of DNA gels stained with Ethidium Bromide



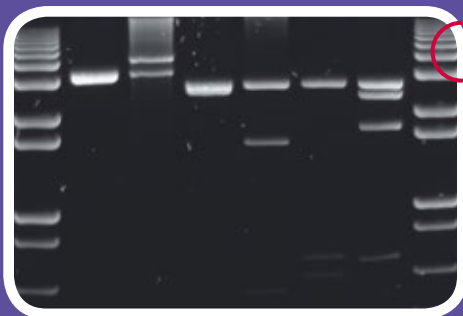
Stain free (option)

Stain free technology removes extra steps and long delays from staining. **GeneSys** and **T:Genius** will capture stain free images automatically



Visible light

With the visible light converter, **T:Genius** can be used to view gels which have been stained with, eg, silver stain and Coomassie blue. You can also view tissues, slides and films



Blue light

Powerful epi blue light for applications requiring blue light excitation, eg, "Safe" dyes such as GFP, SYBR®Green, SYBR Gold, SYBR Safe, SYPRO Ruby, Safe View and Flamingo

These are just some of the applications that can be used with **T:Genius**. The Syngene Applications & Support Department is always ready to discuss your particular application needs and how they can be imaged using the **T:Genius**. The Syngene website contains further technical notes and FAQs covering the use of all Syngene gel documentation systems. Further details can be found at www.syngene.com

T:GENIUS SYSTEMS

Two models available

- **T:Genius** - includes tablet and motor driven zoom lens
- **T:Genius NT** - includes motor driven lens but requires the use of a tablet or PC for image capture

Choice of 3 exciting colours - **hot chilli red**, **cool ice blue**, **bright crystal silver**

Genesys control

- Full capture control - auto or manual
- Application database for thousands of imaging protocols
- Save protocol function lighting, lens and darkroom control
- Full range of image edit functions

Feature 'Statuslink'

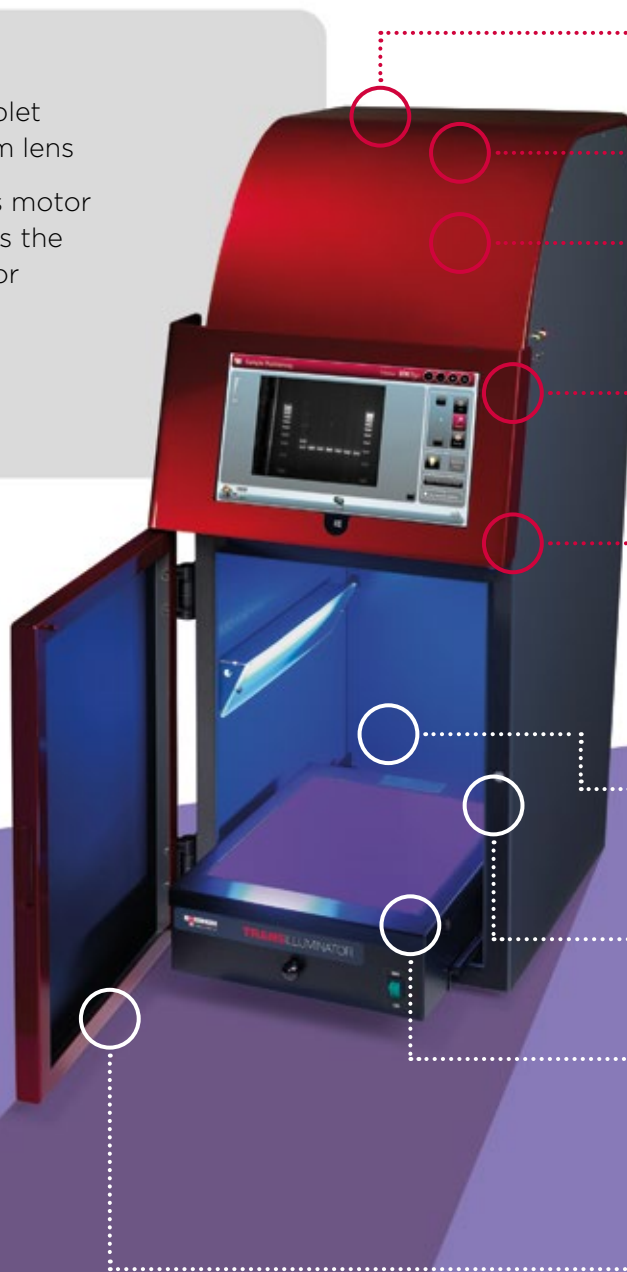
- Connect **T:Genius** to your computer, smart phone or tablet to access your images at any time

GeneTools image analysis

Includes full image analysis function with 4 additional copies of software

Warranty

1 year warranty upgrade available



Camera

Superb 3.2 million pixel resolution - up to 12.9m pixel image output

Lens

f1.0 motor driven zoom lens

Filter slider

3 position manually selected filter holder, includes UV filter as standard

USB connectivity

Stores images onto a USB memory stick

Tablet (Dell venue 11 pro USB3) (optional)

High specification tablet using Windows 8 PRO
Features GeneSys control system
10.8" screen full HD (1080p)
2GB memory, Touch screen

Internal lighting

Internal LED white light and epi blue lighting compatible for use with all "safe" dyes

Safety switch

Protects from accidental UV exposure when opening door

Transilluminator (optional)

UV transilluminator
Slides in and out
Auto UV shut off
Filter size 24x20cm
Visible light converter

Hinged door

Easy access to darkroom

Over 75,000 scientists world-wide in pharmaceutical and biotech companies, as well as academic and government institutions, have chosen Syngene as their expert imaging partner. If you'd like to find out why, please contact us or one of our dealers for more information and a demonstration of the revolutionary **T:Genius**



**Please refer to
www.syngene.com
for all ordering
information**

**Syngene Europe and
International Headquarters:**

Beacon House Nuffield Road
Cambridge CB4 1TF UK
Tel: +44 (0)1223 727123
Fax: +44 (0)1223 727101
email: sales@syngene.com

Syngene USA Headquarters:

5103 Pegasus Court Suite L
Frederick MD 21704 USA
Tel: 800-686-4407/301-662-2863
Fax: 301-631-3977
email: ussales@syngene.com

Website: www.syngene.com

G0056.09.14

All trademarks acknowledged