



UltraSlim LED Transilluminator

Instruction Manual

Catalog Number ULTRA-SLIM

Contents page

1.0 Introduction	3
1.1 Safety requirements.....	3
1.2 Warranty.....	3
1.3 Regulatory notice.....	3
1.4 Specifications.....	4
2.0 Installation	4
2.1. General precautions.....	4
2.2 Using the transilluminator.....	4
2.3 General appearance.....	5
2.3.1 Front panel of the LED transilluminator.....	5
2.3.2 Rear panel of the LED transilluminator.....	5
3.0 Technical support	6

1. Introduction

The UltraSlim transilluminator uses high intensity LED arrays which illuminate a range of dyes including Ethidium Bromide, GelGreen, GelRed, SYBR Green, SYBR Gold, SYBR safe, SYPRO Red, SYPRO Ruby and Ultra Safe Blue.

1.1 Safety requirements

This LED transilluminator is suitable for research use only.

Do not stare directly at the blue LEDs when the unit is switched on.

1.2 Warranty

The LED transilluminator is warranted against defects in materials and workmanship for 1 year. If any defects occur in the instrument or accessories during this warranty period, Syngene will repair or replace the defective parts at its discretion without charge. The following defects, however, are specifically excluded:

1. Defects caused by improper operation.
2. Repair or modification done by anyone other than Syngene or an authorized agent.
3. Damage caused by substituting alternative parts.
4. Use of fittings or spare parts supplied by anyone other than Syngene.
5. Damage caused by accident or misuse.
6. Damage caused by disaster.
7. Corrosion caused by improper solvent or sample.

For enquiries or request for repair service, contact your local Syngene office. Inform Syngene of the model and serial number of your instrument.

1.3 Regulatory notice

IMPORTANT: This Syngene instrument is designed and certified to meet safety standards and EMC regulations. Certified products are safe to use when operated in accordance with the instruction manual. This instrument should not be modified or altered in any way. Alteration of this instrument will:

1. Void the manufacturer's warranty
2. Void the safety and EMC certification
3. Create a potential safety hazard

Syngene is not responsible for any injury or damage caused by the use of this instrument for purposes other than those for which it is intended, or by

modifications of the instrument not performed by Syngene or an authorized agent.

1.4 Specifications

- Dimensions (mm): 210D x 210W x 30H
- Viewing surface (mm): 120 x 100
- Wavelength (nm): 470
- Amber filter: amber filter shield with metal frame
- LED arrangements: matrix for two-side illumination
- LED lifetime: 50,000 hours
- Power: 24V DC 1 A power adaptor
- Compatible with mini gel size (mm): 110 x 60 & 55 x 60
- Weight (Kg): 2.3

2. Installation

Carefully unpack the transilluminator and the shield as follows:

1. First remove the bubble material at the top.
2. Remove the transilluminator from the two bubble material shells and place it on a stable, horizontal surface.
3. Remove the plastic protection film from the transparent glass viewing surface and the amber filter.

How to install in InGenius³ and U:Genius³ systems

1. Insert the black tray into the darkroom then place the UltraSlim transilluminator on top of the tray in the darkroom using the four holes drilled in to the tray to ensure that the UltraSlim is placed in the correct orientation.
2. Plug in the power supply to the unit and then plug in the transilluminator mains lead into the AC power adaptor.

Stand alone installation

1. The instrument must be placed on a bench leaving at least 10 cm of space all around in order to avoid any obstacle that may reduce the ventilation.
2. Connect the instrument to the power using the annexed cable. The power font must be able to deliver at least 250 VA with a voltage between 100 and 240 Vac. The plug must have a ground connection. The adaptor supplies 24 V DC voltage.

2.1 General Precautions

- Plug the transilluminator into a plug socket.
- The transilluminator is equipped with thermal protection to prevent overheating.
- Do not pour liquids directly on the transilluminator.
- Do not block the aeration vents.
- Switch off the instrument immediately after its use.
- The transilluminator sample surface is a glass sheet for cutting gels. When using the transilluminator with samples stained with specific dyes, decontaminate the transilluminator surface with 70% Ethanol. Always wear appropriate Personal Protective Equipment (PPE).

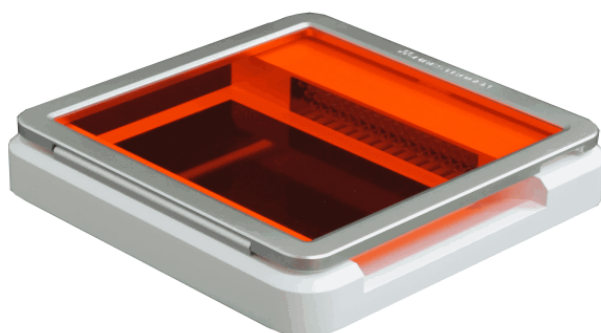
2.2 Using the transilluminator

Place gel/sample on the transparent glass support area. It is recommended that gloves be worn to prevent skin contact with gel and staining reagent. Press the ON/OFF switch to ON. The LEDs within the unit will begin glowing upon the glass support. After viewing the sample or cutting out the bands, turn the transilluminator off.

2.3 General appearance of UltraSlim transilluminator



2.3.1 Front panel of UltraSlim transilluminator



2.3.2 Rear panel of UltraSlim transilluminator



Adaptor: 24V DC / 1 A

Power AC input: 100~240 V; 50/60 Hz power source

3. Technical support

Syngene offers technical support for all of its products. If you have any questions about the product's use or, operation, please contact Syngene.

Syngene Europe Office

Beacon House,

Nuffield Road,

Cambridge,

CB4 1TF

United Kingdom

Tel: +44 (0)1223 727123

Fax:+44 (0)1223 727101

Syngene USA Office

5108 Pegasus Court, Suite M

Frederick

MD 21704

USA

Tel: 800-686-4407 (Toll Free)

Tel: 301-662-2863

E-Mail: support@syngene.com