

*EVE*TM Automatic cell counter



*Don't do manual counting!
You deserve it!*

Affordable cell counter, EVETM

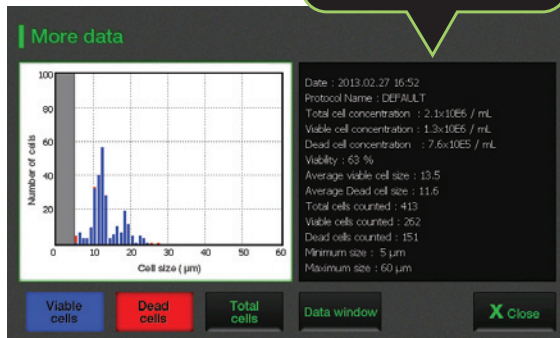
EVETM Automatic cell counter



EVE™ Automatic cell counter uses state-of-the-art optics and image analysis to automatic cell counting. The EVE™ is a benchtop counter, designed to measure cell count and viability (live, dead, and total cells) accurately and precisely, using the standard trypan blue technique.

Key features and benefits

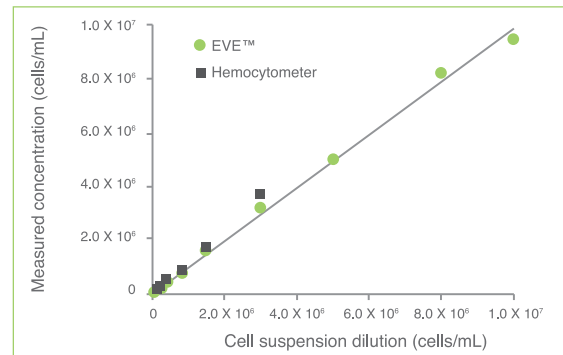
- **Fine distinction of clumped cell**
Provides the accurate counting results with advanced analysis algorithm in clumped cell
- **Applicable for broad range of cell sizes and types**
Primary (tissue, blood) cell lines and stem cells
- **User friendly**
7 inch LCD touch screen
Bench top size
No maintenance needed
- **Data store and analysis**
Store 500 test results, transfer the data to PC using USB drive
PC based software provided for in-depth analysis
- **Cell size gating**
Select range of cell size using gating function



Convenient for use



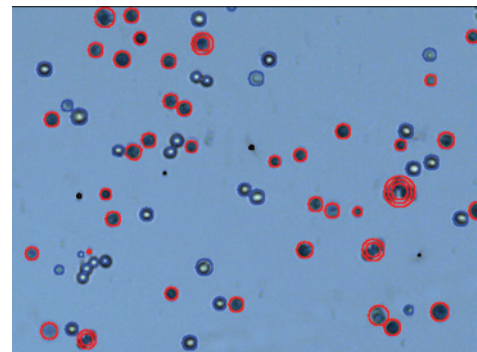
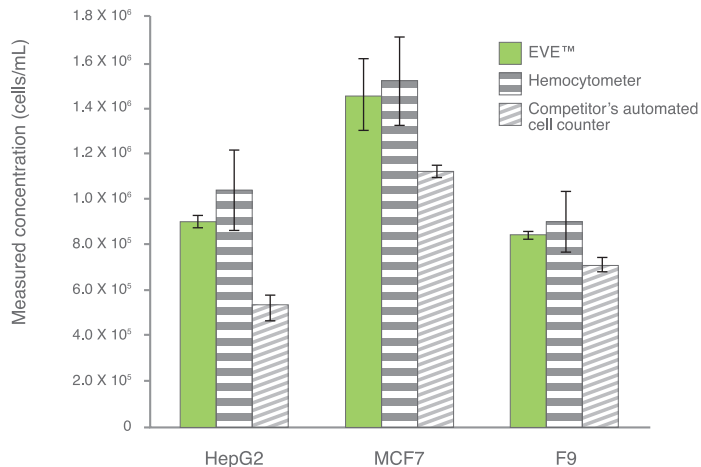
Correlation of EVE™ and manual counting



Measuring from the EVE™ extend further the high concentration range than hemocytometer readings

Faster!
More accurate!

o Total cell counting result (Clumped cell)



The MCF7 breast cancer cell line can be very clumpy. The EVE™ counting algorithm identifies and counts individual cells within these cell clumps for accurate analysis.

Clumped cells (HepG2, MCF7, F9) were counted with a EVE™, a hemocytometer and the competitor's automated cell counter. In accuracy and precision, EVE™ is comparable to the hemocytometer for all cell lines. The competitor's automated cell counter counts significantly less in clumped cells. Cell counting results were performed on three counters with seven sample replicates.

o Cell lines validated on EVE™

Cell Type	Animal	Organ	Growth Properties
HeLa	Human	Skin	Adherent
NIH-3T3	Mouse	Embryo	Adherent
U2-OS	Human	Bone	Adherent
Jurkat	Human	Blood	Suspension
KG-1	Human	Blood	Suspension
HepG2	Human	Liver	Adherent
Hep3B	Human	Liver	Adherent
LNCaP	Human	Prostate	Adherent
SH-SY5Y	Human	Brain	Adherent
SCN2.2	Rat	Brain	Adherent
F9	Mouse	Embryo	Adherent
MCF7	Human	Breast	Adherent
A549	Human	Lung	Adherent
GH3	Rat	Pituitary gland	Adherent



○ Specifications

Counting time	< 20 seconds
Cell measurement range (cells/mL)	$1 \times 10^4 - 1 \times 10^7$
Optimal measurement range (cells/mL)	$1 \times 10^5 - 4 \times 10^6$
Cell size range	5 – 60 μm
Sample volume	10 μL
Staining Method	Trypan blue stain
Display	7" LCD touch screen
Exported format	JPEG (image), CSV (raw data)
Data export	USB drive
Dimensions	27 cm (w) \times 20 cm (d) \times 19 cm (h)
Weight	2.1 kg

○ Ordering information

Cat. No.	Description	Contents
EVE-MC	EVE™ Automatic cell counter	Main device, Power supply, USB drive, EVE™ Cell counting slide (50 slides, with 1 ea x 1.5 mL of trypan blue (0.4%))
EVS-050	EVE™ Cell counting slide	50 slides (100 counts, with 1 ea x 1.5 mL of trypan blue (0.4%))
EVS-1000	EVE™ Cell counting slide	1,000 slides (2,000 counts, with 20 ea x 1.5 mL of trypan blue (0.4%))
EVS-5000	EVE™ Cell counting slide	5,000 slides (10,000 counts, with 100 ea x 1.5 mL of trypan blue (0.4%))
EBB-001	Test beads Concentration(avg.) 1.0×10^6	2 ea X 1 mL

EVE™

Automatic cell counter

Nano**EnTek**

NESCT-EVE-001E(V.0.0)

Demo request

demo@nanoentek.com

website

www.nanoentek.com

e-mail

sales@nanoentek.com

NanoEnTek Inc.

12F, Ace High-end Tower, 235-2, Guro3-dong,
Guro-gu, Seoul, 152-740, Korea
Tel : +82-2-6220-7913
Fax : +82-2-6220-7721

NanoEnTek USA Inc.

5627 Stoneridge Drive Suite 304, Pleasanton,
CA 94588, USA
Tel : +1-925-225-0108, +1-888-988-0108(Toll free)
Fax : +1-925-225-0109